



GN2402-INE3

Tau Wae	GN2402-INE3	RoHS Tūnga	RoHS Compliant
Kaihanga / Waitohu	Semtech	Waehere Stock	4190 pcs stock
Whakaahuatanga Hua	IC RETIMER 4CH 9.8-11.1GBS 44QFN	Tuhinga mai i	Hong Kong
Ngā Rauemi	Optical & IC Selector Guide.pdf	Te Ara Tuhi	DHL/Fedex/TNT/UPS/EMS

Tikina he Whakatauranga

Paatohia te "Tikina he panui" ka whakakāia nga mara e hiahiatia ana. Ka urupare matou ki to tono i roto i nga haora 24 i te ra i te imeera. Mena ka tutaki koe ki tetahi take, waiho koa he panui, imeera ranei i a maatau i info@global-ic.hk, a ka hoki mai ano matou ki a koe i te wa e taea ai.

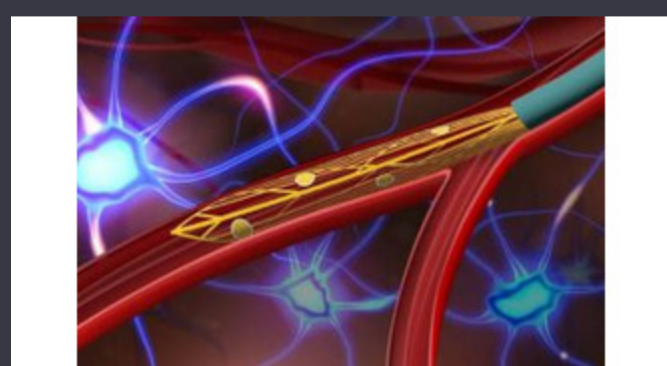
TIKINA HE WHAKATAURANGA

Ko te whakaahua he tohu. Tirohia nga korero mo nga taipitopito hua.

o GN2402-INE3

Tuhinga o mua	3.3V	Pūrere Pūrere Whakarato	44-QFN
Raupapa	-	Ratonga - Whakauru: Whakaputa	4:4
Paa / Case	-	Pūhera	Tray
PLL	-	Whakaputa	Clock, Data
Tae Mahi	-	Tuhinga o mua	1
Momo Tae	Surface Mount	Te Tumuaki Matua	-
Whakauru	Clock, Data	Tautanga - Max	10.3125Gbps
Motuhake - Whakauru: Whakaputa	-	Tau hua hua	GN2402

Panui Whakapono



He iti noa te raru o te roro o te roro

2023/07/21

Te Ao Whakauru: Nga uiui Ataata - Longsys i runga i te R & D, hoahoa me nga hoko rokiroki

2023/03/27

Ble oro me tona waahi i roto i te whanaketanga o te bluetooth

2023/07/19

Rutronik me Mediatek Waitohu Ka kawea mai e Iot Genio raupapa ki Uropi me Ihairaira

2023/07/4

12V, 48v ranei nga tohu mana hiko e tuku ana i te 800W

2023/09/13

Ko te Sony e whai ana i tetahi kamera i te Drones me nga Robots mo nga Kaiwhakamahi Ahumahi

2023/09/6

Tirohanga: Te kitenga o te Wildfire-wawe me nga tohu IOT ma te whakamahi i te Lerawan

2023/07/14

I te ihirangi kua tohua: Calterah, te kaiarahi i te Kaiwhakarato MMWawave ic, e kawea ana i te kōpaki SoC Radar SoC mo

2023/09/11

Ihirangi i tautokohia: Te neke ki te angitu: Te whakakotahi i te OT me te Ipurangi Ahumahi Ahumahi

2023/09/18

Te Ao Whakauru 2023: Tikina te Guide i te Whiringa-a-Roto Aiao

2023/03/17

Ka whiwhi a Borgwarner i te mana SIC mai i St tae atu ki te Onsemi

2023/08/31

He tohu-a-waea-waea mo te tuku me nga waka iti-rōrahi

2023/09/13